

Copyright Reserved

The Contractor shall verify and be responsible for all dimensions.
DO NOT scale the drawing - any errors or omissions shall be
reported to Stantec without delay.
The Copyrights to all designs and drawings are the property of
Stantec. Reproduction or use for any purpose other than that
authorized by Stantec is forbidden.

Consultants

Legend

2	ISSUED FOR ADDENDUM #3	CB	AA	25.07.30
1	ISSUED FOR ADDENDUM #2	CB	AA	25.07.17
Revision		By	Appd.	YY.MM.DD

ISSUED FOR CONSTRUCTION	CB	AA	25.06.04
Issued	By	Appd.	YY.MM.DD

File Name:	Dwn.	Chkd.	Dsgn.	YY.MM.DD
------------	------	-------	-------	----------

Permit-Seal

ORIGINAL
DRAWING
SEALED BY
A. AROUTOUNOV
MEMBER
31095
Stantec Consulting Ltd.
2025-06-04



Certificate of Authorization
Stantec Consulting Ltd.
No. 1301

Client/Project

WINNIPEG TRANSIT MAINTENANCE FACILITY
OFFICE REDEVELOPMENT

421 OSBORNE ST. SOUTH, WINNIPEG, MB

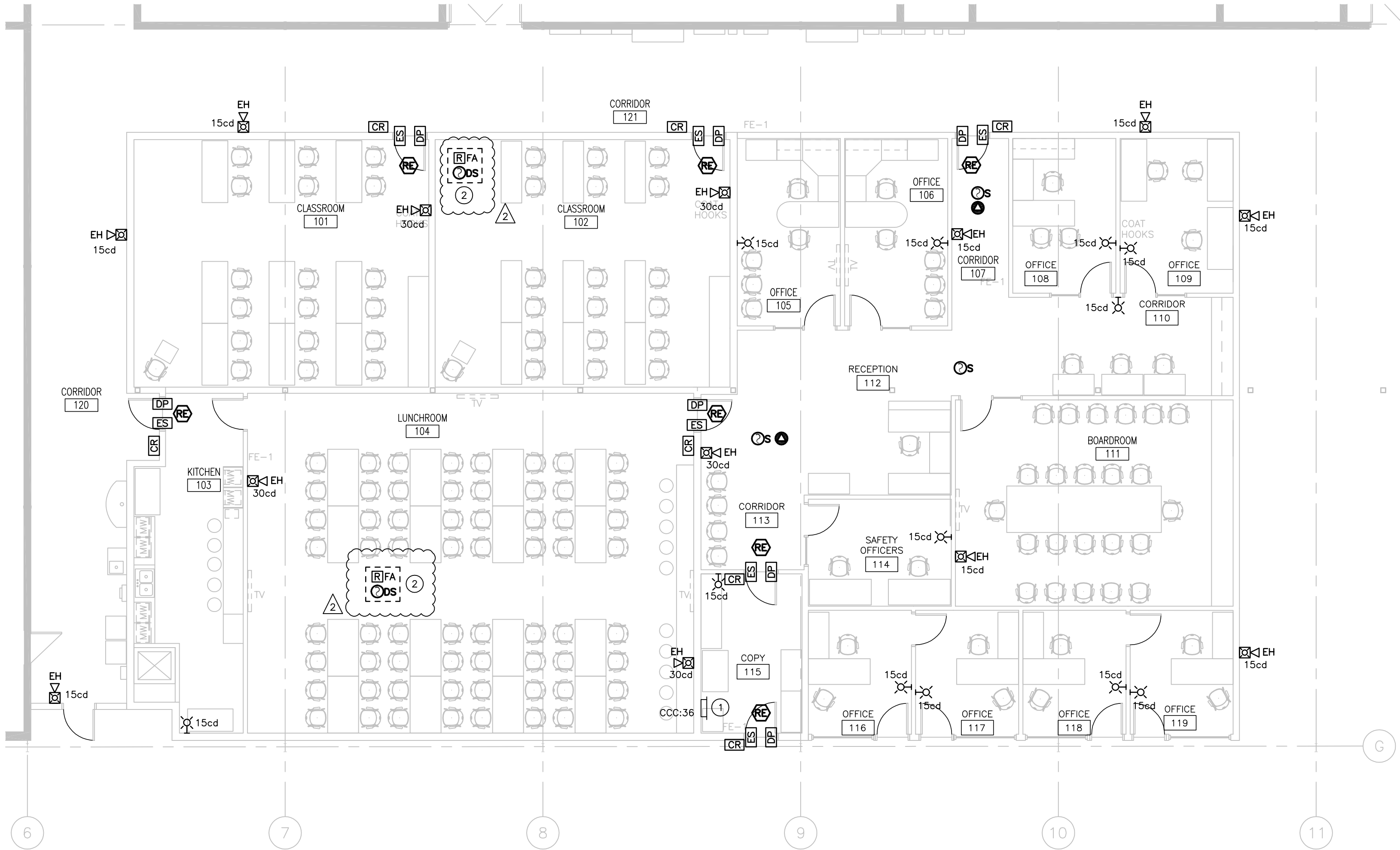
Title

PARTIAL FLOOR PLAN - FIRE ALARM AND -
SECURITY - NEW CONSTRUCTION

Project No.	Scale
115421006	1/8"=1'-0"

Drawing No.	Sheet	Revision
-------------	-------	----------

E-206 12 of 18 2



1 PARTIAL FLOOR PLAN – FIRE ALARM AND SECURITY – NEW CONSTRUCTION
E-206 1/8" = 1'-0"

GENERAL NOTES:

1. PROVIDE AND CONNECT FIRE ALARM DEVICES TO EXISTING FIRE ALARM CIRCUIT SERVING AREA WITH CAPACITY. ENSURE NEW FIRE ALARM DEVICES ARE COMPATIBLE WITH EXISTING FIRE ALARM MANUFACTURER 'NOTIFIER'.
2. FIRE ALARM AS-BUILT RECORD DRAWINGS TO BE COMPLETE WITH CONDUIT ROUTING CLEARLY INDICATED AND ALL FIRE ALARM ADDRESSES DENOTED WITH THE RESPECTIVE DEVICE.
3. FIRE ALARM TESTING TO BE CONDUCTED IN ACCORDANCE WITH THE CITY OF WINNIPEG INTEGRATED LIFE SAFETY SYSTEM TESTING.

KEY NOTES:

1. PROVIDE NEW PRE-WIRED (12 DOOR) ACCESS CONTROL PANEL COMPLETE WITH 5, 2 DOOR NETWORK CONTROLLERS. CONTROL PANEL TO BE ALTRONIX TROVE MODEL T2M7XK1D. 2 DOOR NETWORK CONTROLLERS TO BE MERCURY LP1502. CONTRACTOR RESPONSIBLE FOR WIRING ACCESS CONTROL SYSTEM AS WELL AS DOOR HARDWARE. COORDINATE ACCESS CONTROL SYSTEM WITH CITY OF WINNIPEG INTRUSION, ACCESS CONTROL, AND SURVEILLANCE STANDARDS 2024.
2. PROVIDE DUCT DETECTOR WITHIN THE SUPPLY AIR DUCT. DUCT DETECTOR TO BE CONNECTED TO FIRE ALARM SHUT DOWN RELAY TO SHUT DOWN RTU-1 / ERV-1 UPON ACTIVATION. COORDINATE DUCT LOCATION WITH MECHANICAL.